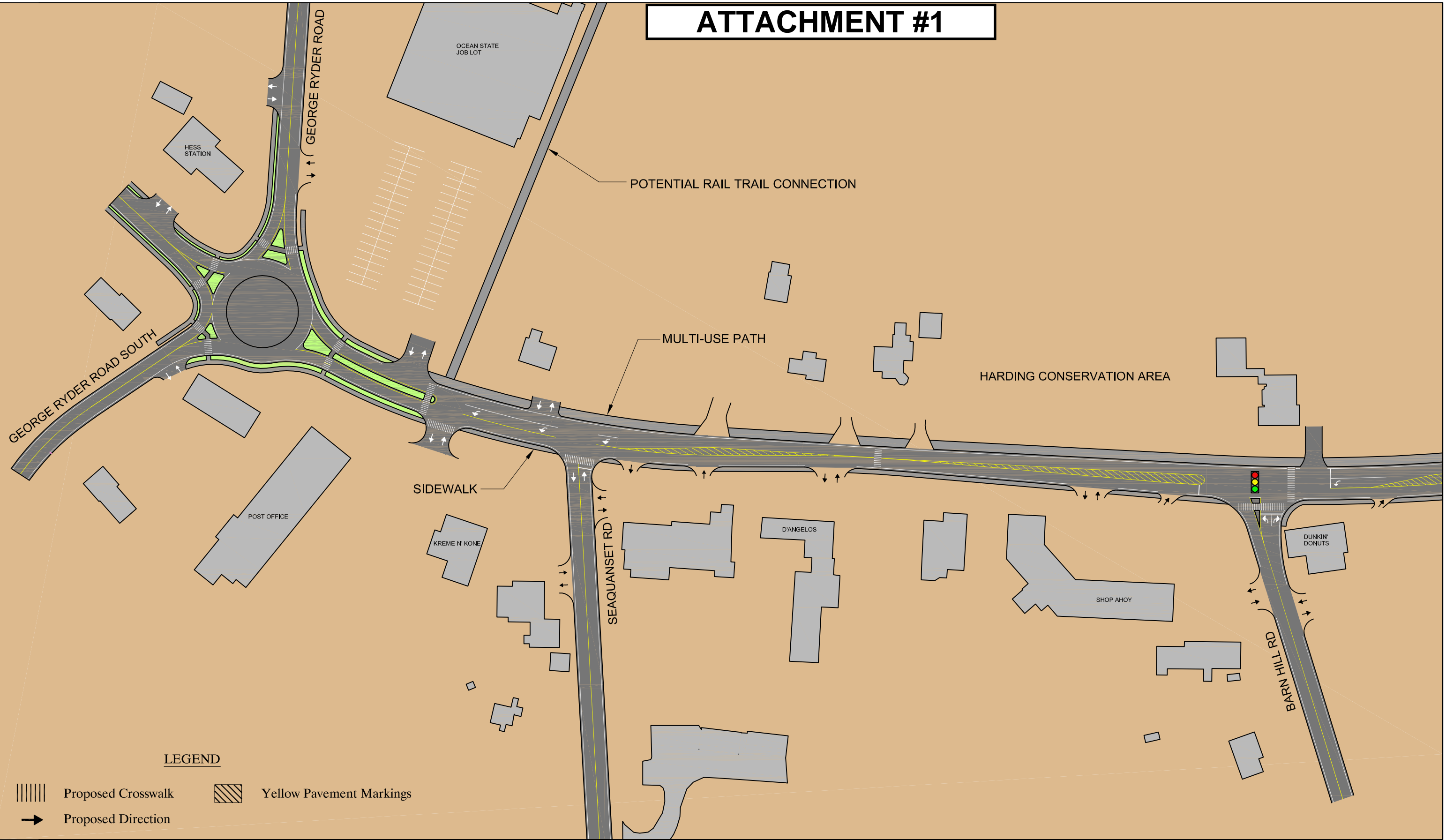


[borens_s] - March 28, 2011 - 9:42am - T:\PC-025 Chatham-Rte 28\Design-Traffic\Render Corridor Scenario 1.dwg [11x17]

ATTACHMENT #1



LEGEND

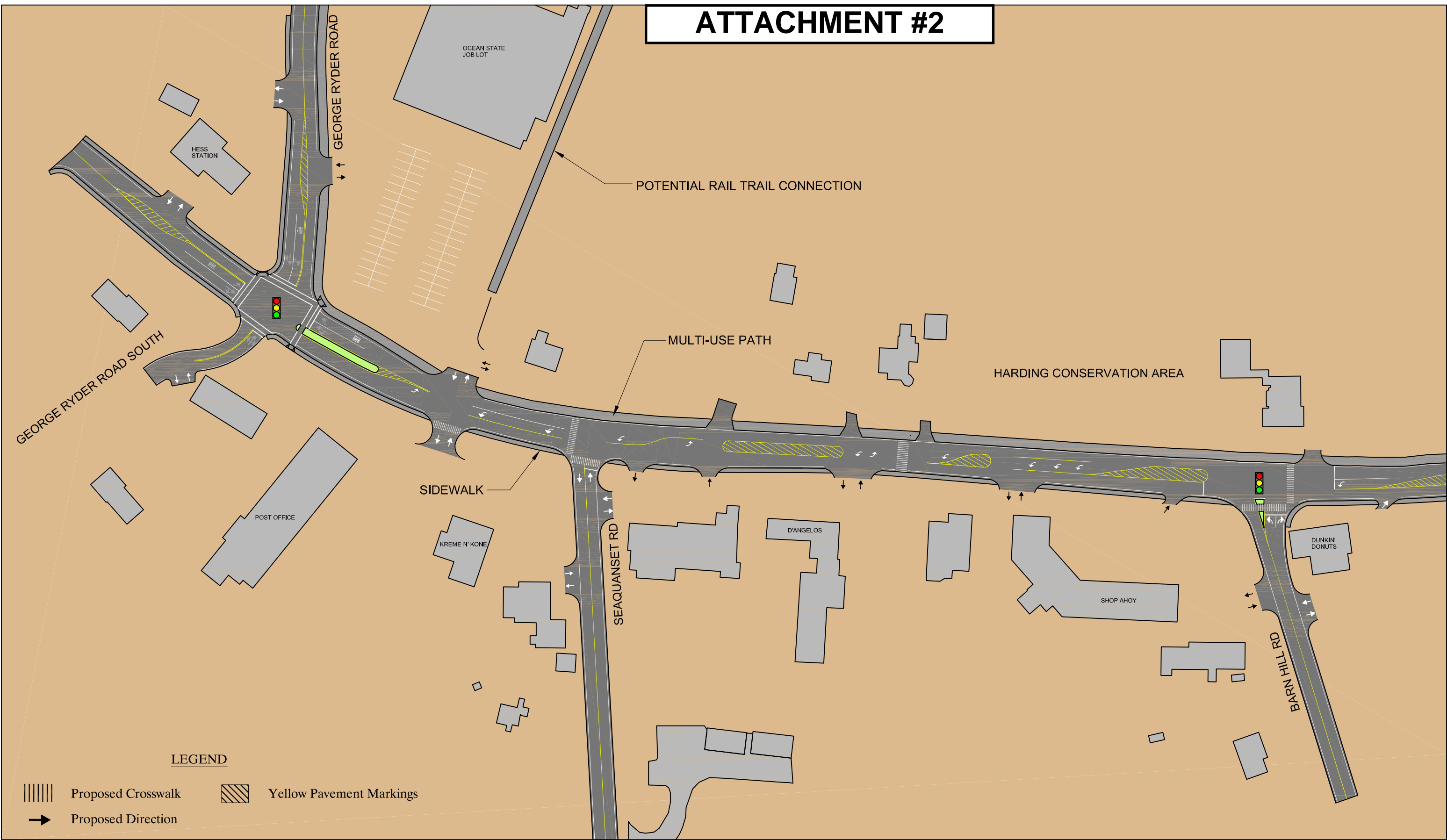
-  Proposed Crosswalk
-  Yellow Pavement Markings
-  Proposed Direction

Scale: 1" = 100'
COMPOSITE SCENARIO 1

Route 28 - George Ryder to Barn Hill Road
 Chatham, MA

[borens_s] - March 28, 2011 - 9:45am - T:\PC-025 Chatham-Rte 28\Design-Traffic\Render Corridor Scenario 2.dwg [11x17]

ATTACHMENT #2



LEGEND

-  Proposed Crosswalk
-  Proposed Direction
-  Yellow Pavement Markings

Scale: 1" = 100'
COMPOSITE SCENARIO 2

Route 28 - George Ryder to Barn Hill Road
 Chatham, MA

ATTACHMENT #3



BEARSES
POND

N



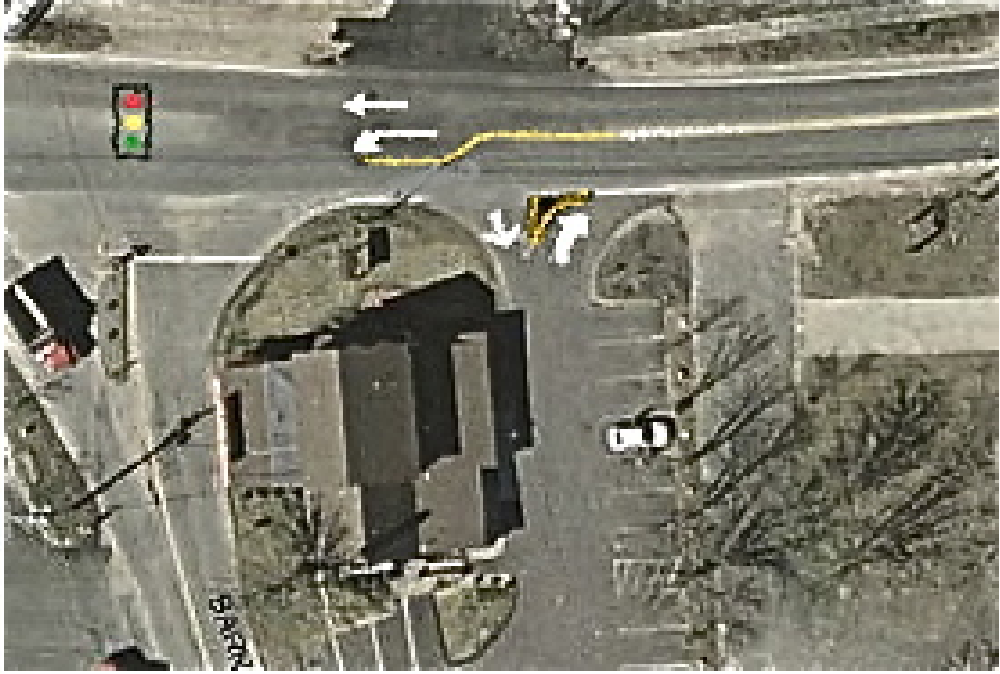
0 50 100 200 Feet

ATTACHMENT #3 – Intersection Details

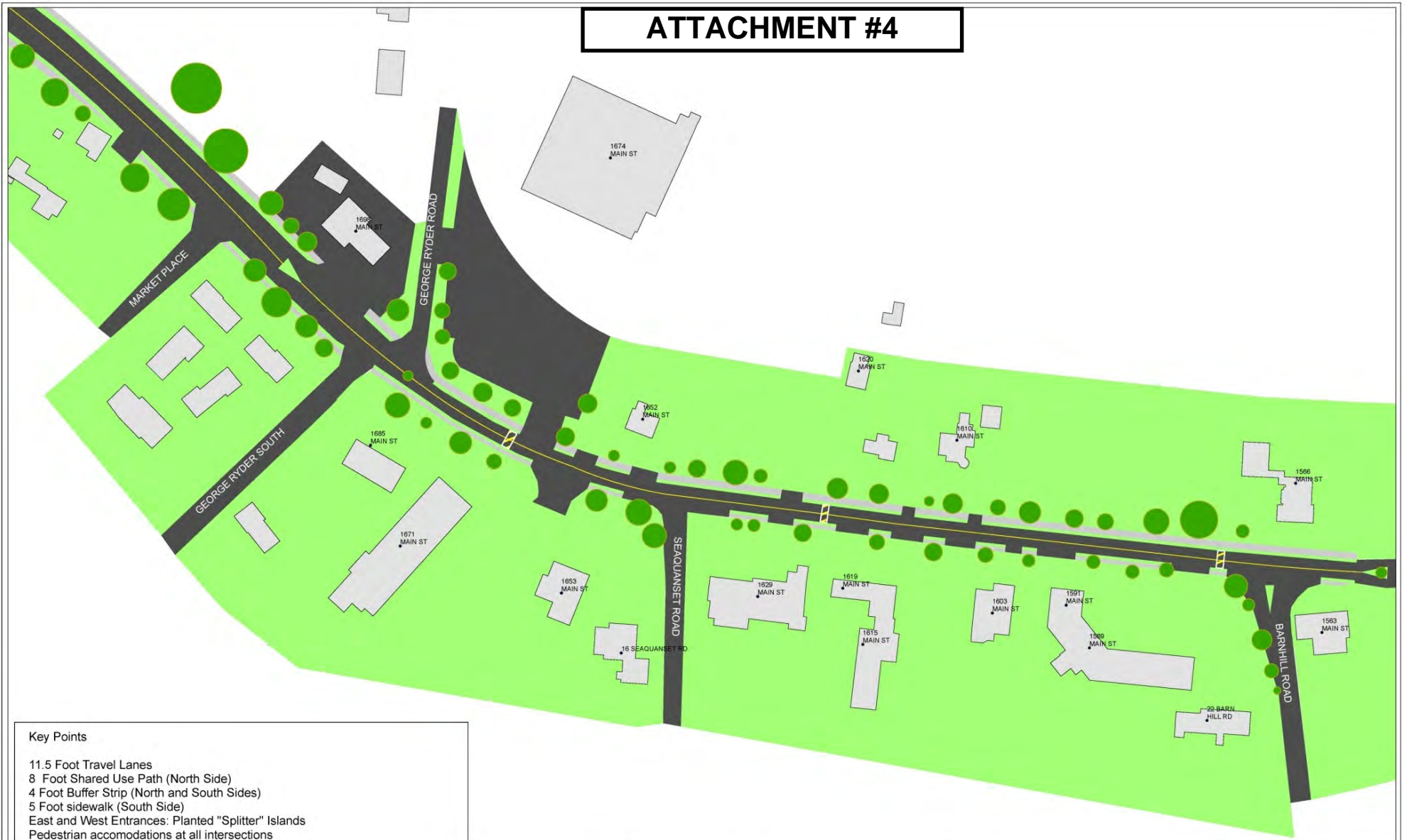
George Ryder Road / George Ryder Road South



Barn Hill Road



ATTACHMENT #4



Key Points

- 11.5 Foot Travel Lanes
- 8 Foot Shared Use Path (North Side)
- 4 Foot Buffer Strip (North and South Sides)
- 5 Foot sidewalk (South Side)
- East and West Entrances: Planted "Splitter" Islands
- Pedestrian accommodations at all intersections
- Bike Connection: To be determined
- Maintain existing curb cuts until further traffic/land use analysis is completed
- Target Speed: 20-25 MPH

Note: This plan is for general reference and illustrative purposes only.
Dimensions shown on this plan are approximate.

West Chatham Neighborhood Center Alternative Concept

West Chatham Village and Business Association

February 17, 2011

1 inch = 50 feet

