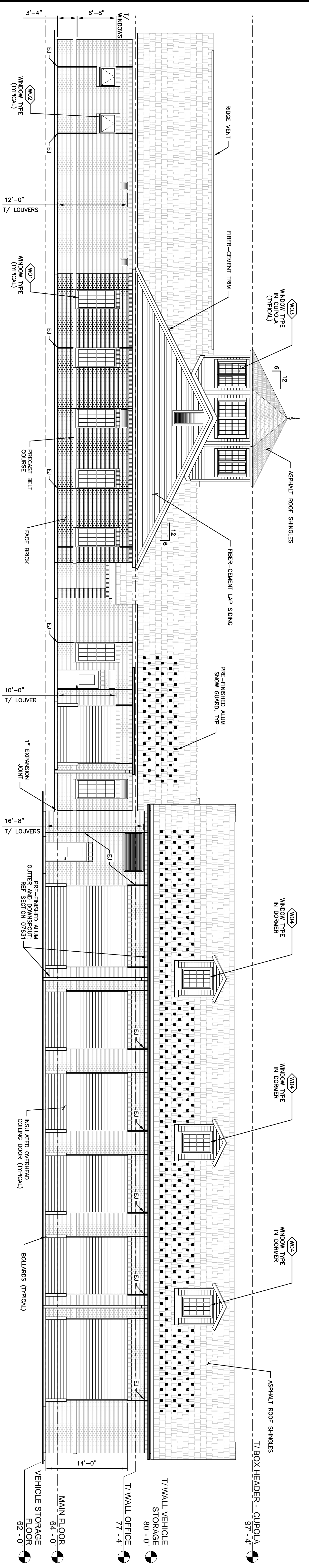
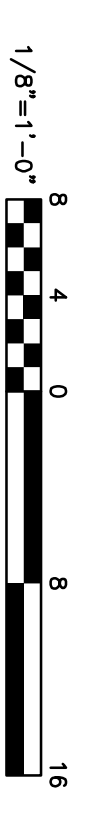


OPERATIONS BLDG - NORTH ELEVATION
SCALE: 1/8"=1'-0"



OPERATIONS BLDG - SOUTH ELEVATION
SCALE: 1/8"=1'-0"



NOTES:
Underground facilities, structures, and utilities have been plotted from available surveys and records, and therefore their locations must be considered approximate only. There may be others, the existence of which is presently not known. Anyone using utility information and data provided herein shall call 'Dig-Safe' at 1-888-344-2333 seventy two (72) hours, 3 business days in construction. Verify the location of utilities prior to start of construction.

| NO. | ISSUE | DATE | DESIGNER | CHECKED | DEPARTMENT SUPERVISOR |
|-----|-----------------------------------|-------|----------|---------|-----------------------|
| 3 | FOR UNOFFICIAL CONFORMED DRAWINGS | 4/10 | | | |
| 2 | FOR CONSTRUCTION | 11/09 | TAL | | |
| 1 | FOR APPROVAL | 7/09 | TAL | SEB | |

STEARN'S & WHEELER
Environmental Engineers & Scientists
LLC

HYANNIS, MASSACHUSETTS

| | | | | |
|---|----------|-----------|-------|-----|
| TOWN OF CHATHAM, MASSACHUSETTS | JOB NO. | 91057 | SHEET | A-6 |
| WPCF PHASE I IMPROVEMENTS | CONTRACT | 2010-CWMP | 1 | |
| OPERATIONS BUILDING EXTERIOR ELEVATIONS | | | | |