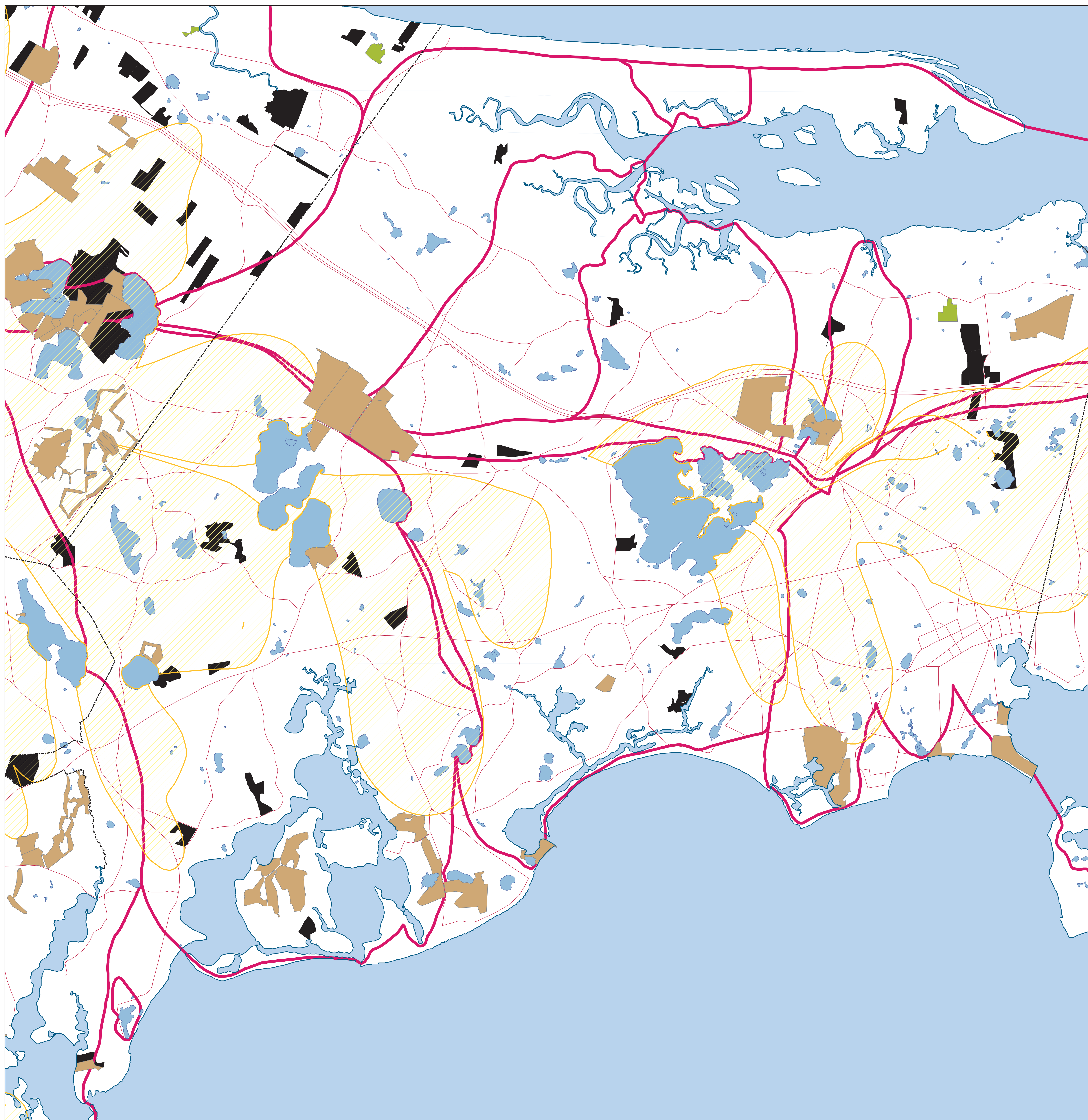


Sewers and Smart Growth: Challenges, Opportunities and Strategies Barnstable



Smart Growth Project Large Lots

Parcel sizes in square feet

- Current DEP Zone II (December 2008)
- Undeveloped lot greater than ten acres
- Agricultural use greater than ten acres (*)
- Recreational use greater than ten acres

(* Agricultural use parcels are not present in every town)

- Water Body
- Mass. Military Reservation
- Embayment Outline



Data Sources:

Marine Embayment Watershed Boundary: (also known as Marine Water Recharge Areas) Delineated by CCc Water Resources Office under the Cape Cod Coastal Embayment Project. Data shown is current as of the 10/30/08 draft Regional Policy Plan update submitted for review by the County Assembly of Delegates.

Parcel size designations: Assessor's parcel data from individual towns.

Non - digital data was automated by the Cape Cod Commission GIS staff using the ARC/INFO GIS software.

Sewers and Smart Growth: Challenges, Opportunities and Strategies is a project of the Cape Cod Water Protection Collaborative, with partial funding from the Massachusetts Environmental Trust. This map was produced by the Cape Cod Commission's Geographic Information System Department (gis@capecodcommission.org). The Cape Cod Water Protection Collaborative and Cape Cod Commission are divisions of Barnstable County.

This map is illustrative and all depicted boundaries are approximate. It is intended for planning purposes only - - not site specific purposes.

