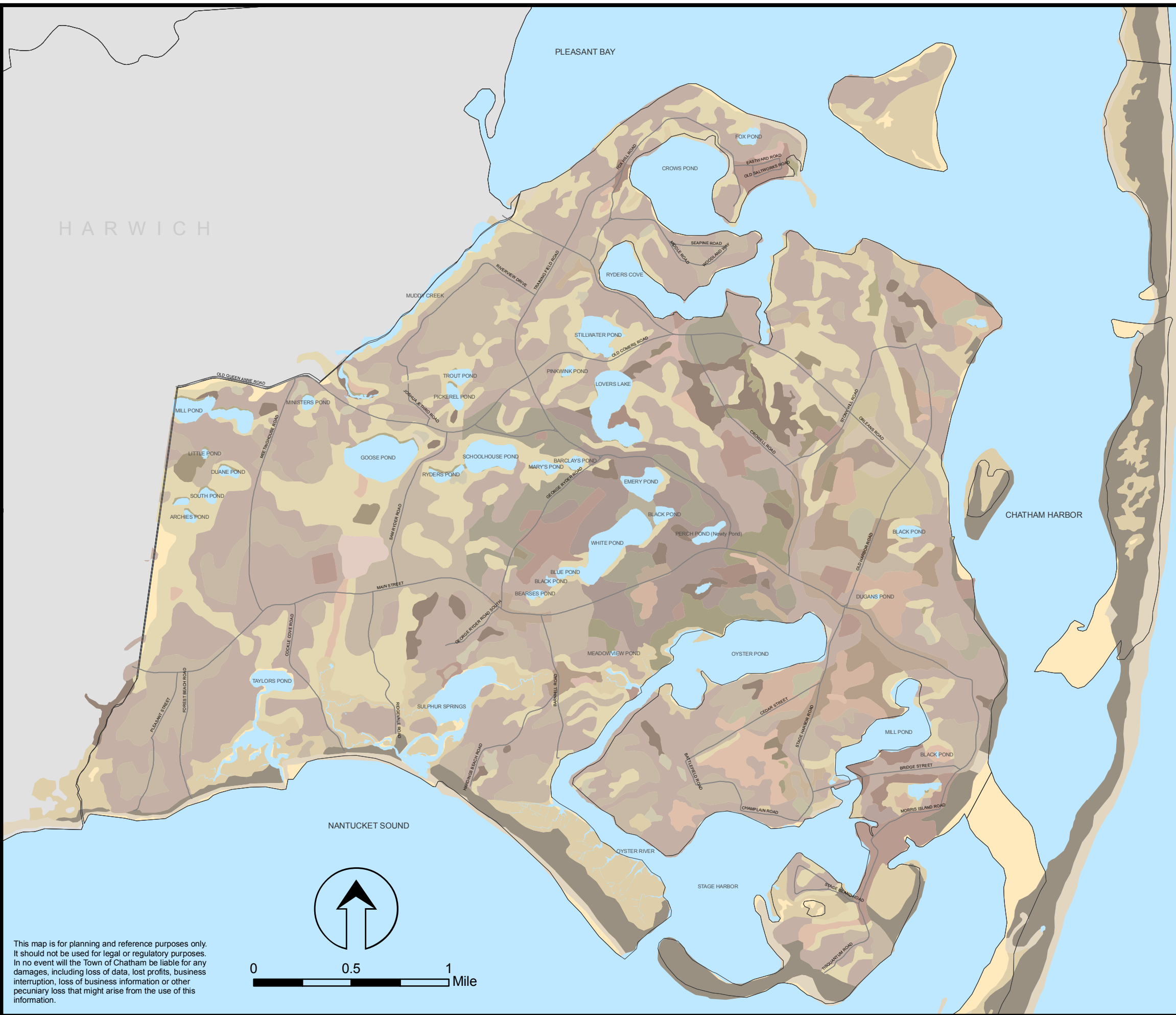


Town of Chatham
2010 Open Space & Recreation Plan

FINAL DRAFT

**Map 3
Soils**



Chatham Soils *MassGIS 2007*

- Bh - Beaches
- BIB - Belgrade Silt Loam, 3-8% Slopes
- BmA - Berryland Mucky Loamy Coarse Sand, 0-2% Slopes
- BoB - Boxford Silt Loam, 3-8% Slopes
- CdA - Carver Coarse Sand 0-3% Slopes
- CdB - Carver Coarse Sand 3-8% Slopes
- CdC - Carver Coarse Sand, 8-15% Slopes
- CdD - Carver Coarse Sand 15 -35% Slopes
- DeA - Deerfield Loamy Fine Sand 15 - 35% Slopes
- Dm - Dumps, Landfill
- EaB - Eastchop, Loamy Fine Sand 0-3% Slopes
- EaC - Eastchop Loamy Fine Sand 8 - 15% Slopes
- EnB - Enfield Silt Loam 3 - 8% Slopes
- FmA - Freetown Mucky Peat 0 -1% Slopes
- FsA - Freetown Mucky Peat 0 - 1% Slopes
- FtA - Freetown Coarse Sand 1% Slope
- HnA - Hinesburg Sandy Loam 0-3% Slopes
- HnB - Hinesburg Sandy Loam 8 - 15% Slopes
- HnC - Hinesburg Sandy Loam 8 - 15% Slopes
- HoC - Hooksan Sand, Rolling
- MeA - Merrimac Sandy Loam 0 - 3% Slopes
- MeB - Merrimac Sandy Loam 3 - 8% Slopes
- MeC - Merrimac Sandy Loam 8 - 15% Slopes
- NaB - Nantucket Sandy Loam 3 - 8% Slopes
- NaC - Nantucket Sandy Loam 8 - 15% Slopes
- PeA - Pipestone Loamy Coarse Sand 0 - 3% Slopes
- Pg - Pits, Sand, Gravel
- Ud - Udipsamments, Smoothed
- Ur - Urban Land

This map is for planning and reference purposes only. It should not be used for legal or regulatory purposes. In no event will the Town of Chatham be liable for any damages, including loss of data, lost profits, business interruption, loss of business information or other pecuniary loss that might arise from the use of this information.

