



**COQX 75**

**AIRPORT COMMISSION 1949-2024**

# Chatham Airport Commission

75 Years Serving the Community

Public Information Session  
April 10, 2024

Paramount responsibility of the Chatham Airport Commission is safety

- for all airport users
- neighbors and visitors
- in the air and on the ground

We are striving

- to be a good, environmentally friendly neighbor
- to enhance the aviation experience for everyone

# Updated Fly Friendly Program

- Noise is the most common complaint the Commission receives
- Noise abatement is being addressed proactively
- Voluntary curfew for aircraft landing and departing from 10:00PM-7:00AM
- Information will be published in the appropriate FAA publications
- It will also be prominently posted at the airport
- [Fly Friendly Brochure](#)

# New Airport Commission Website

The new website is scheduled to launch May 1, 2024

- It will be available 24/7 to provide
  - Accurate, candid, transparent information about the airport
  - Simple, user-friendly means for anyone to contact the Commission directly
- In simple terms – the new web site will provide answers to questions that commissioners regularly hear

# New Airport Commission Web Site

- Interactive information resource for everyone
- Easy public communication with the Commission
- Answers questions about the airport, its facilities and operations
- A gateway to other related web resources - Commission's document center, Commission-meeting archives and videos
- Updates on events and current projects
- Source of historic Chatham aviation information

[Airport Commission Web Site](#)

# Straight Talk

- The Commission makes every effort to be straightforward, honest and candid with the public
- There is no plan or other “hidden agenda” for expansion of the Airport, Airport traffic or types of planes using the Airport

# Straight Talk

- The obstruction removal program
  - entails trimming and/or removing trees intruding into navigable airspace
  - responds exclusively to FAA mandates
  - protects and ensures safety of pilots, passengers and persons on the ground
- There is no plan, purpose or “hidden agenda” to encourage larger aircraft to utilize the Airport – in questionable weather conditions or otherwise

# The Obstruction Removal Project

- Is a safety precaution mandated by the FAA
- Will observe utmost care for the environment, especially the area around the vernal pool
- In compliance with Chatham Conservation Commission and the Cape Cod Commission

# The Obstruction Removal Project

- The airport approaches make the landing environment safer for pilots and passengers
- Enhances safety of those on the ground
- Does not expand the airport
- Does not encourage more aircraft of any type to use the airport

# Reconciliation of Map to Approaches

- 1958 approach map is out-of-date
- 2024 map accurately reflects approach zones mandated by current FAA guidelines and advisories
- Map update will reflect approaches in use today

# Compliance

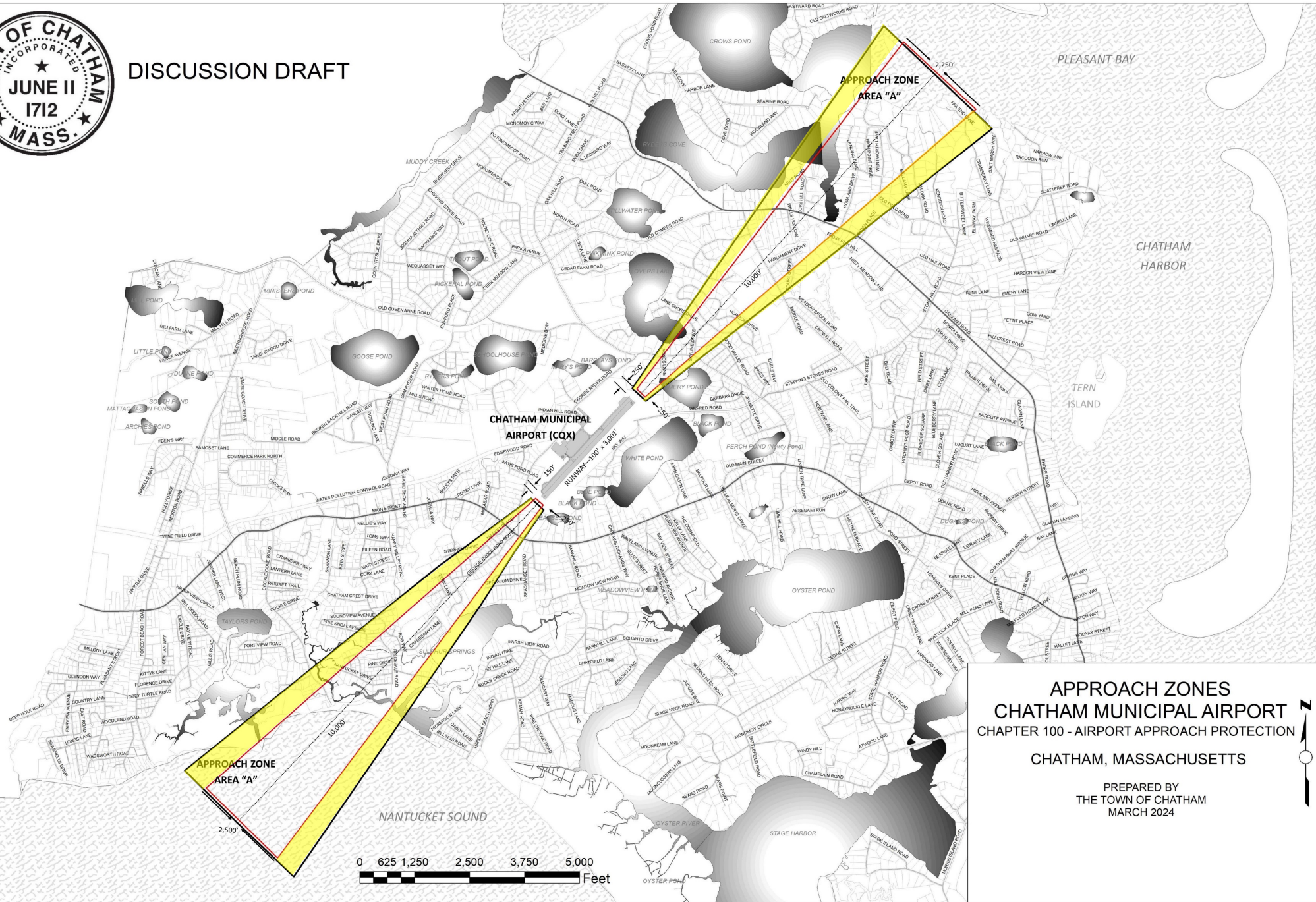
- All property owners whose trees are affected have been contacted and so informed
- Every other owner of property under the 2024 map approach zone will receive written notice if the map amendment is approved

# Compliance

- A list of all properties added under the 2024 map approach zone will be posted on the Airport Commission website
- Unless, sometime in the future, a property owner under the 2024 map approach zone has trees growing into the approach surface, this amendment will have no effect on them




# DISCUSSION DRAFT



**APPROACH ZONES**  
**CHATHAM MUNICIPAL AIRPORT**  
CHAPTER 100 - AIRPORT APPROACH PROTECTION

CHATHAM, MASSACHUSETTS

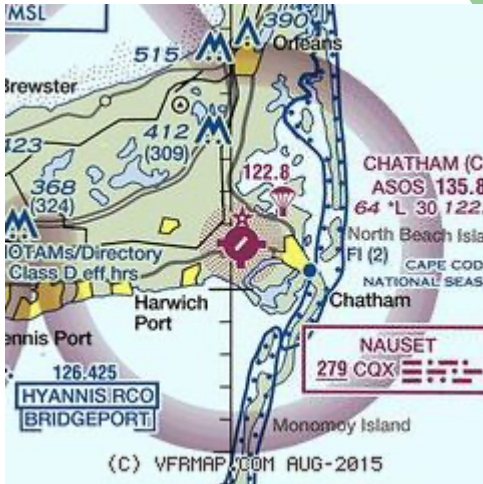
PREPARED BY  
THE TOWN OF CHATHAM  
MARCH 2024





Thank You





## Why are these measures important?

Pilots who participate in the voluntary noise abatement program at Chatham Municipal Airport help reduce aircraft noise over developed areas. Complying with voluntary noise abatement procedures helps maintain the characteristics of Chatham that have made it an inviting place to live, work, and visit. The Airport Commission encourages pilots to “fly friendly” whenever possible and to always “FLY SAFE”.

The recommendations included in this brochure are for your information. Pilots are asked to adhere to these procedures out of respect for people on the ground and other pilots.

For reasons of safety, it should be understood that FAA rules, weather, and safety considerations may at times require deviation from these suggested procedures.



*For more information or to leave comments on the Fly Friendly program please contact us via email at [airportcommission@chatham-ma.gov](mailto:airportcommission@chatham-ma.gov) or phone: 508-945-5109*

**Chatham Airport Commission**

549 Main St.  
Chatham, MA 02633

# FLY FRIENDLY

Chatham Airport Voluntary  
Noise Abatement Program

*Chatham Municipal Airport  
240 George Ryder Rd.  
Chatham, MA 02633*



**Chatham Airport Commission**

508-945-5109  
[airportcommission@chatham-ma.gov](mailto:airportcommission@chatham-ma.gov)

## What is the Issue?

### CHATHAM IS A NOISE SENSITIVE AREA.

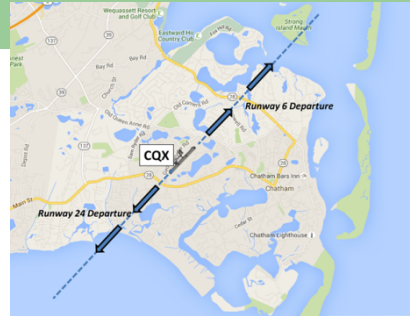
Residential development over time has resulted in the increase of neighborhoods under aircraft flight patterns. Maintaining a quiet and peaceful environment for the Town's residents and visitors is a high priority of Chatham Airport.

In an effort to be good neighbors, Chatham Airport is encouraging aircraft operators to be aware of surrounding neighborhoods and encouraging pilots to "fly friendly" and make attempts to mitigate aircraft noise when safe and practical.

**Please help CQX be a courteous neighbor by observing our Noise Abatement Program. Thank you for your cooperation!**



**NOISE SENSITIVE AREA**  
Use Full Runway & Avoid Intersection Departures  
Minimize / Avoid Touch & Go Operations  
Climb Out On Runway Heading Until 1000ft  
Or Over Water Then Proceed on Course  
Reduce Power As Soon As Practical



### HOW CAN I BE PART OF THE SOLUTION?

Follow these voluntary noise abatement arrival and departure procedures.

- Voluntary Curfew Hours from 10:00 PM to 7:00 AM. Please avoid operations during the curfew period.
- Use full runway for take-off and landings and avoid intersection departures.
- Climb out on runway heading until 1,100ft MSL and over water then proceed on course.
- Reduce power as soon as practical.
- Minimize touch-and-goes. Avoid multiple aircraft in closed traffic pattern.
- TPA 1,100 ft MSL – Piston Aircraft  
TPA 1,600 ft MSL – Turbine Aircraft
- Fly a tight traffic pattern, as practicable.



### METHODS ON THE GROUND:

- Limit run-up time to minimum necessary.
- Minimize unnecessary noise on the apron.
- Remember: Propeller RPM is the largest contributor of excessive noise. Altitude and distance from noise-sensitive areas also significantly reduce the noise footprint.
- Turbine aircraft should park in designated areas on the apron.
- Rotary-wing aircraft should avoid flights below 1,000 ft AGL within 5 miles of the airport.



# **NEW AIRPORT COMMISSION WEBSITE**

**Screenshots from April 10, 2024**

## **Public Information Session**

### New Airport Commission Website

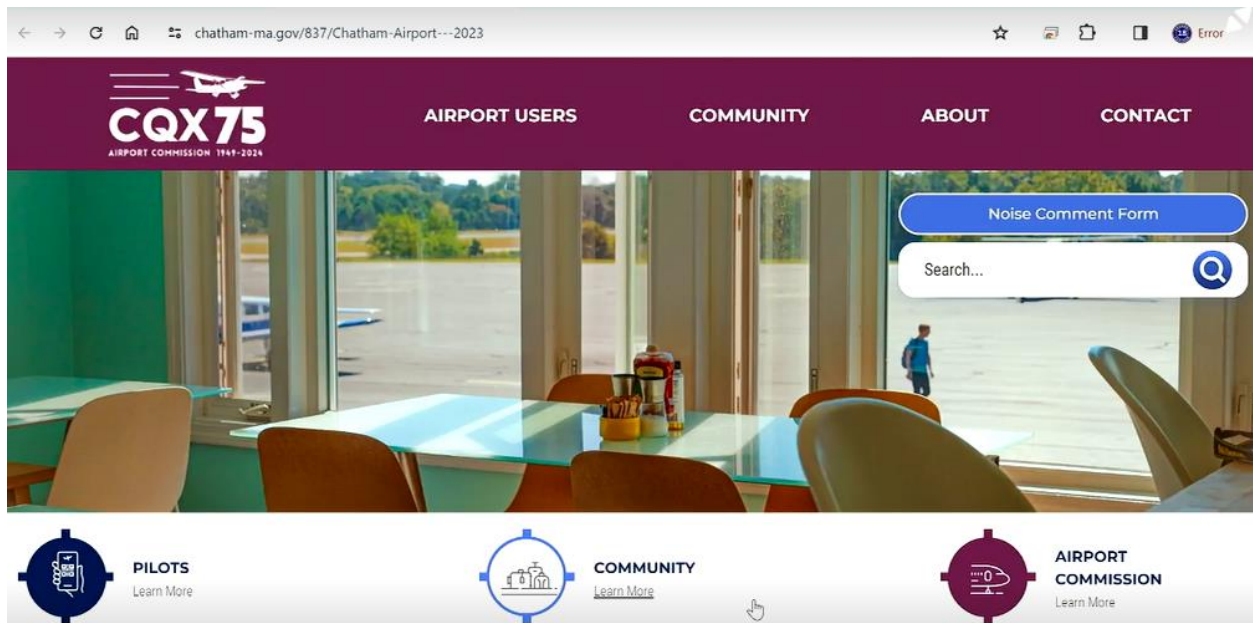
The new website is scheduled to launch May 1, 2024

- It will be available 24/7 to provide
  - Accurate, candid, transparent information about the airport
  - Simple, user-friendly means for anyone to contact the Commission directly
- In simple terms – the new web site will provide answers to questions that commissioners regularly hear

# New Airport Commission Web Site

- Interactive information resource for everyone
- Easy public communication with the Commission
- Answers questions about the airport, its facilities and operations
- A gateway to other related web resources - Commission's document center, Commission-meeting archives and videos
- Updates on events and current projects
- Source of historic Chatham aviation information

[Airport Commission Web Site](#)





[Noise Comment Form](#)

Search...

Noise Comment Form

Chatham Chamber of Commerce

Feature Links > Chatham Airport - 2023 > Community

## Community

[Fly Friendly Noise Comment Form](#)

Commerce

First Name\*

Last Name\*

Phone Number\*

E-Mail Address\*

---

Noise Event - Date & Time\*

Type of Comment - Check all that apply

Excessive Noise   
  Speech Disturbance   
  Too Early or Late  
 Hovering   
  Low Altitude   
  Sleep Disturbance  
 Excessive Vibration   
  Frequency   
  Other

Type of Aircraft\*

Tail Number, if Available\*

Description/Color of Aircraft\*

Direction of Flight


chatham-ma.gov/837/Chatham-Airport---2023


**CQX 75**  
AIRPORT COMMISSION 1941-2024

AIRPORT USERS    **COMMUNITY**    ABOUT    CONTACT

Noise Comment Form  
Chatham Chamber of Commerce  
Cape Cod Chamber of Commerce

Noise Comment Form

Search... 




**PILOTS**  
Learn More

**COMMUNITY**  
Learn More

**AIRPORT COMMISSION**  
Learn More

chatham-ma.gov/837/Chatham-Airport---2023



**PILOTS**  
Learn More

**COMMUNITY**  
Learn More

**AIRPORT COMMISSION**  
Learn More

**AIRPORT FIXED BASED OPERATOR (FBO)**  
Learn More

**PROJECTS**  
Learn More

**CONTACT**  
Learn More





- Noise Comment Form
- Chatham Chamber of Commerce
- Cape Cod Chamber of Commerce

Feature Links > Chatham Airport - 2023 > Community

## Community

### Fly Friendly Noise Comment Form

#### Fly Friendly Commitment statement:

The Chatham Airport Commission's commitment to noise mitigation and management is designed to inform the community about the airport's operations and what the Commission is doing to address noise issues. Noise comments will be collected and reviewed for commonalities so that specific problems can be addressed appropriately.

The jurisdiction of the Airport Commission and the Airport Manager is limited to advising pilots about voluntary noise abatement through the Fly Friendly Program, as well as signage at the departure ends of the runways. How to register a noise comment:

- [Link to Noise Comment Form](#)
- Airport Commission phone Number: 508-945-5109; Fax: 508-945-5152
- If an aircraft's volume seems excessive, the public can report it online to the Federal Aviation Administration (FAA) Regional Noise Ombudsman via email to: [9-ane-noise@faa.gov](mailto:9-ane-noise@faa.gov). Members of the public who would prefer to phone in a complaint should call 781-



The jurisdiction of the Airport Commission and the Airport Manager is limited to advising pilots about voluntary noise abatement through the Fly Friendly Program, as well as signage at the departure ends of the runways. How to register a noise comment:

- [Link to Noise Comment Form](#)
- Airport Commission phone Number: 508-945-5109; Fax: 508-945-5152
- If an aircraft's volume seems excessive, the public can report it online to the Federal Aviation Administration (FAA) Regional Noise Ombudsman via email to: [9-ane-noise@faa.gov](mailto:9-ane-noise@faa.gov). Members of the public who would prefer to phone in a complaint should call 781-238-7400.

To report other concerns, such as Low Flying Aircraft, Ground Operations, or Airport Policy, please follow this link: [Reporting-Aircraft Airport-Concerns](#)

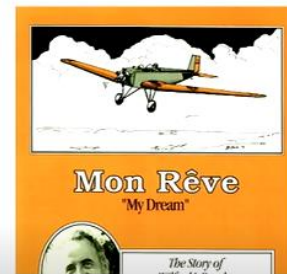
#### Operations Data:

- [Total Operations per month](#)
- [Turbine Operations per month](#)

Airport History - [Mon Reve \(My Dream\) - The Story of Wilfred Berube and his Airport at Chatham on Cape Cod by Bob Whittier \(PDF\)](#)

#### General Information:

- Types of aircraft that use the airport with photos.





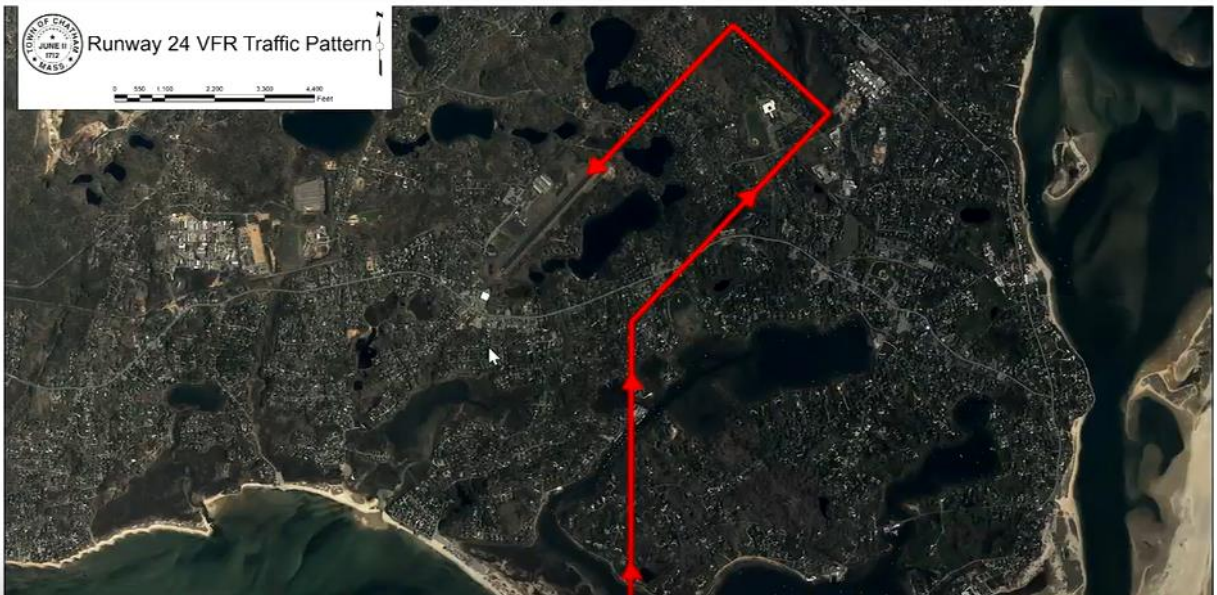
#### Aerial Map Links

- [Map of Cape Cod and Chatham](#)
- [Airport Schematic - Simplified ALP Sheet 4](#)
  - Tie Down Areas
  - Fuel Farm
  - FBO
  - Hangars
  - Helicopter Parking
  - Turbine Parking
- [Runway 24 Standard Pattern](#)
- [Runway 24 Straight In Approach](#)
- [Runway 24 Preferred Departure Route](#)
- [Runway 6 Standard Pattern](#)
- [Runway 6 Straight In Approach](#)
- [Runway 6 Preferred Departure Pattern](#)



Instrument approaches and departures are determined by the pilot's flight plan in coordination with ATC.

- Boston Approach: 603-594-5554



# Welcome to Chatham!



DIRECTORY



DEALS



JOB POSTINGS



MAP



NEWS



EVENTS CALENDAR



SHOP



STAY



ACTIVITIES



DINE



SPECIAL OFFERS &  
ACTIVITIES



CHATHAM  
MERCHANTS ASSOC.



Chatham is located on the elbow of Cape Cod surrounded on three sides by water. Located halfway between